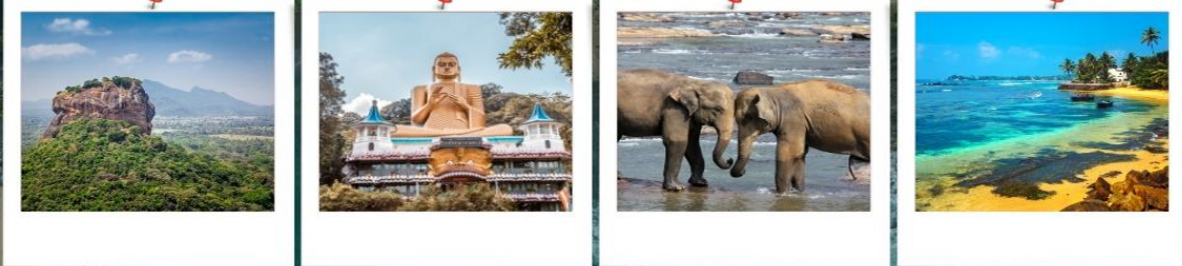


# SRILANKA



## SRILANKA 6 NIGHT- 7 DAYS

Family

6 NIGHT- 7 DAYS

**trip care**®

The Destination Management Company

*The Most Trusted & Lovable Travel  
Company*



**The Complete Travel Solution**



### Nagpur Office

Corp Office  
**My Trip Care**  
F4 2 nd floor Jai umiya plaza  
Beside south point school Nagpur  
7507740786 /7020252982

### Also In

Amravati Akola Raipur Rajula  
Mumbai Bilaspur

Final Rate is depend on: flight, train, Arrival / Departure time, Season, Day, USD or local currency rate, Type of transport etc :: **Final Costing Will Do After Ticketing / Here lowest Airfare /Train SL calculated ::**  
**:: WE GUARANTEE The Prices OF LAND PACKAGES ONLY Not Flight/train Ticket prices::**

## ITINERARY 6 NIGHTS - 7 DAYS

---

### Day 1 - Colombo → Anuradhapura

Arrive at Colombo Bandaranaike International Airport. After completing immigration and baggage formalities, meet your local representative and proceed to Anuradhapura (approximately 4 hours drive). Enjoy the scenic countryside views en route.

On arrival, check in at your hotel and relax. Later, visit the sacred sites of Sri Maha Bodhi and Ruwanwelisaya Dagoba, two of the most important Buddhist pilgrimage sites in Sri Lanka.

Meals: Lunch & Dinner

---

### Day 2 - Anuradhapura → Dambulla Sightseeing

After breakfast, proceed to Dambulla (approximately 2 hours). Visit the famous Dambulla Cave Temple, a UNESCO World Heritage Site known for its ancient rock paintings and beautiful Buddha statues.

Later, check in at the hotel and relax. In the evening, you may enjoy leisure time or opt for an optional visit to the Sigiriya Rock Fortress (entrance fee extra).

Meals: Lunch & Dinner

---

### Day 3 - Dambulla → Kandy Sightseeing

After breakfast, drive to Kandy (approximately 3 hours). On the way, visit a Spice Garden where you can learn about Sri Lanka's famous spices and traditional herbal products.

Upon arrival in Kandy, visit the sacred Temple of the Tooth Relic, one of the most important Buddhist temples in the world. Later, explore the city. In the evening, enjoy a Cultural Dance Show featuring traditional Sri Lankan performances.

Meals: Lunch & Dinner

---

### Day 4 - Kandy → Nuwara Eliya Sightseeing

After breakfast, depart for Nuwara Eliya (approximately 3 hours), also known as "Little England" of Sri Lanka.

En route, visit a Tea Plantation and Tea Factory to learn about the production of the world-famous Ceylon Tea.

Upon arrival, check in at your hotel. Later, visit Gregory Lake and enjoy the peaceful atmosphere of this beautiful hill station.

Meals: Lunch & Dinner

---

### Day 5 - Nuwara Eliya → Bentota

After breakfast, proceed to Bentota, a popular coastal destination (approximately 5-6 hours).

On arrival, check in at your hotel and relax. Spend the rest of the day enjoying the beautiful beach or opt for a Bentota River Safari (at your own cost).

Meals: Lunch & Dinner

---

## Day 6 - Bentota → Colombo City Tour

After breakfast, drive to Colombo (approximately 2 hours).

Upon arrival, enjoy a Colombo City Tour covering major attractions such as Galle Face Green, Independence Square, Gangaramaya Temple, Old Parliament Building, Kelaniya Raja Maha Vihara Temple, and a BLICH Visit.

Later, enjoy shopping at Odel, House of Fashion, or other popular shopping malls in Colombo. In the evening, check in at your hotel and enjoy your farewell dinner.

Meals: Lunch & Dinner

---

## Day 7 - Colombo → Nagpur

After breakfast, check out from the hotel and enjoy lunch before proceeding to the Colombo Airport.

Board your return flight for onward travel to Nagpur with wonderful memories of your Sri Lanka tour.

Meals: Breakfast & Lunch

---

## INCLUSIONS

Accommodation in 3★ hotels on double sharing basis.

All transfers and sightseeing by AC KDH High-Roof Van.

English-speaking driver throughout the tour.

Meals - Breakfast, Lunch & Dinner (Indian / Sri Lankan).

Entrance tickets mentioned in the itinerary.

Sri Lanka Visa - Free & Included.

All government taxes, driver allowance, fuel, tolls, and parking charges.

## EXCLUSIONS

Travel / Medical insurance.

Personal expenses such as shopping, laundry, beverages, tips, etc.

Water sports and optional activities.

Extra meals not mentioned in the meal plan.

Early check-in / Late checkout charges.

Room, vehicle, or service upgrades.

Medical or emergency expenses.

Anything not mentioned under inclusions.

## ENTRY FEES INCLUDED

Sri Maha Bodhi - Anuradhapura entrance fee is included.

Aluvihara Temple entrance fee is included.

Dambulla Cave Temple entrance fee is included.

Temple of the Tooth Relic - Kandy entrance fee is included.

Bentota Turtle Hatchery entrance fee is included.

Final Rate is depend on: flight, train, Arrival / Departure time, Season, Day, USD or local currency rate, Type of transport etc :: **Final Costing Will Do After Ticketing / Here lowest Airfare /Train SL calculated ::**  
**:: WE GUARANTEE The Prices OF LAND PACKAGES ONLY Not Flight/train Ticket prices::**

